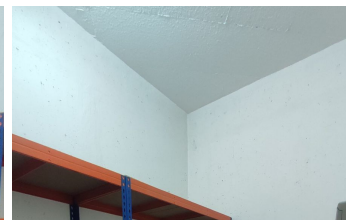
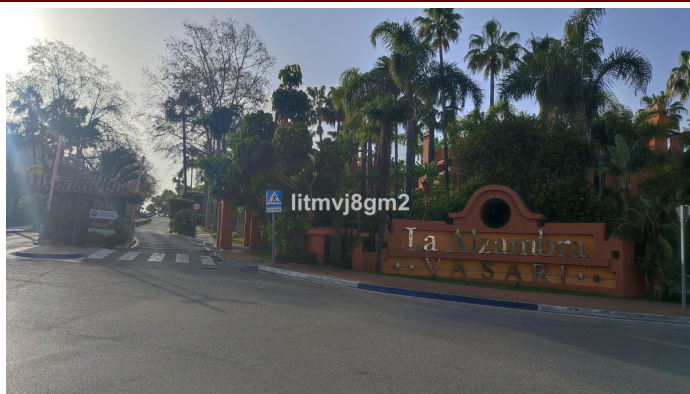


INTERMOBILIARIA



Comercial en Puerto Banús – habitaciones – baños

Hab.	0	Bathrooms	0	Const.	9m2	Terraza	0m2
R4974640		property		Puerto Banús		28.000€	

PROPERTY IN FULL DOMAIN Storage unit in an ideal location in LA ALZAMBRA, NUEVA ANDALUCIA opposite Puerto Banus. The unit has a surface area of 6.5 m² and includes an additional private access area of approximately 7 m², suitable for storing a motorcycle. There is vehicle access right up to the storage unit's door, allowing for easy parking, loading, and unloading. The unit is in excellent condition and features video surveillance. It is accessible 24 hours a day and is free from dampness. Perfect as extra storage for a household or for businesses and freelancers seeking a clean, secure, and convenient place to store their belongings. Exact dimensions: 195 cm by 322 cm and 330 cm in height.