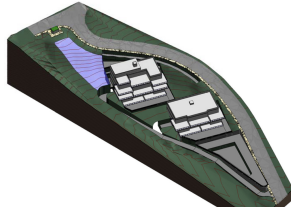


# INTERMOBILIARIA



## Terreno en La Cala Golf – habitaciones – baños

Hab.	<b>0</b>	Bathrooms	<b>0</b>	Const.	<b>1704m2</b>	Terreno	<b>4446m2</b>
	<b>R3848254</b>	<b>property</b>		<b>La Cala Golf</b>		<b>1.500.000€</b>	

Investment plot of 4.446m<sup>2</sup> with buildable 1.704,06m<sup>2</sup> and maximum of 20 units. Residential Plot, La Mairena, Costa del Sol. Garden/Plot 4446 m<sup>2</sup>. Setting : Suburban, Country, Mountain Pueblo, Close To Golf, Close To Sea, Close To Town, Close To Schools, Urbanisation. Orientation : East, South, South West. Condition : New Construction. Views : Sea, Mountain, Panoramic. Utilities : Electricity, Drinkable Water.