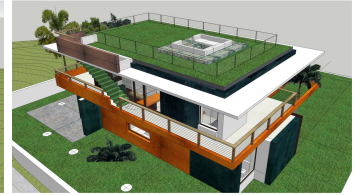
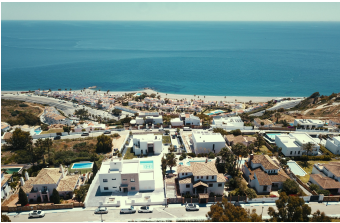


# INTERMOBILIARIA



## Villa - Chalet en Manilva – 3 habitaciones – 2 baños

Hab. **3** Bathrooms **2** Const. **200m2** Terreno **800m2**  
**R4831183** **property** **Manilva** **1.050.000€**

TURN-KEY VILLA PROJECT - THERE IS NO BETTER PRODUCT AVAILABLE Spacious Plots: Sizes range between 800-1600sqm, offering ample outdoor living space. Sea Views: Enjoy a partial sea view from the garden level, with breathtaking views from the upper level. Flexible Design: Choose from 3-6 bedrooms and 2-6 bathrooms, with a built area of approximately 200-600sqm. Personalize Your Space: Have the opportunity to influence the layout and design to match your preferences (only for the first client / subject to feasibility)

Barbeque  
Domotics  
Private Terrace  
Utility Room

Barbeque  
Ensuite Bathroom  
Solarium

Covered Terrace  
Fitted Wardrobes  
Storage Room