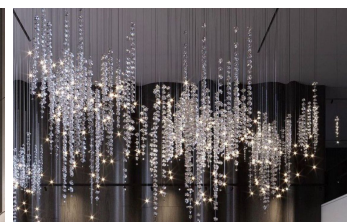
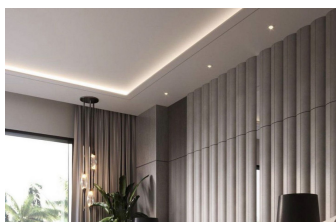


INTERMOBILIARIA



Villa - Chalet en El Madroñal – 5 habitaciones – 5 baños

Hab. **5** Bathrooms **5** Const. **700m2** Terreno **2690m2**
R4871509 **property** **El Madroñal** **4.950.000€**

VILLA WITH PANORAMIC SEA VIEWS IN MADRONAL! TOTAL PROJECT PRICE: €4 950 000
Includes plot price (2656 sq m) + turnkey construction cost. BECOME YOUR OWN PROPERTY DEVELOPER Upon completion, the market value of a similar project will range between €10,000,000 and €11,500,000. The price of a comparable villa from other developers starts at €7,500,000. We empower our clients to become primary developers! COMPLETE DESIGN AND BUILD CONTROL The design and layout of each villa are fully customized for every client. You control every stage—from budgeting, designing, and construction to finishes, installations, and interior design. You create your own dream home! NO ADVANCE PAYMENTS REQUIRED
Construction payment plan: Payments are made after the successful completion of each stage of the project, ensuring transparency and trust throughout the entire process. This exceptional project is located in MADRONAL, surrounded by luxury villas. The plot is offering uninterrupted sea views. All neighboring are ensuring a peace. About Our Project: We have been developing high-quality properties for decades with our dedicated team of architects, designers, builders, and project managers. By cutting out intermediaries, we offer the most competitive prices in today's market. What's included in our price: - Excavation and site preparation - Concrete foundation and structural works Robust, innovative, and energy-efficient building technology (AAC blocks) - Exterior finishes (plastering, decorative elements) Interior finishes (plastering, painting, flooring) - Floor and tiling work, including the supply and installation of porcelain tiles (1m x 1m), bathroom tiling, and skirting boards Electrical installations (cabling, switches, fuse boxes, sockets, lighting, and telecommunications) - Water underfloor heating system installation - Low-energy LED lighting (interior and exterior) designed to enhance natural daylight Plumbing and sewerage installation for bathrooms and kitchen, including fittings (sinks, toilets, taps, and showers) - Air conditioning

installation (Mitsubishi or Samsung), including outdoor and indoor units Aluminium carpentry (exterior doors and windows) with thermal bridge breaks, matte black finish, and locking systems - Wooden carpentry (interior doors, handles, hinges, wardrobes, bathroom furniture, and entrance door) - Kitchen installation, including furniture and built-in appliances - Photovoltaic system installation - Swimming pool construction (14m x 6m) - Exterior works, including garden landscaping, irrigation system, fencing, entrance gate, parking, and gazebo IVA not included.

Covered Terrace

Jacuzzi

Sauna

Covered Terrace

Lift

Solarium

Gym

Private Terrace

Utility Room