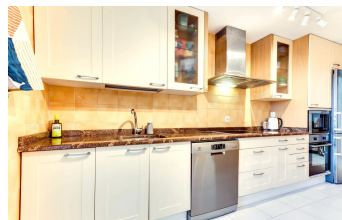
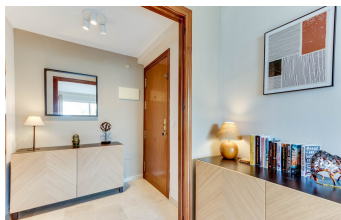


# INTERMOBILIARIA



## Apartamento en Benalmádena Costa – 3 habitaciones – 2 baños

|      |                 |                 |          |                          |             |                 |            |
|------|-----------------|-----------------|----------|--------------------------|-------------|-----------------|------------|
| Hab. | <b>3</b>        | Bathrooms       | <b>2</b> | Const.                   | <b>92m2</b> | Terraza         | <b>8m2</b> |
|      | <b>R4734052</b> | <b>property</b> |          | <b>Benalmádena Costa</b> |             | <b>342.500€</b> |            |

We are pleased as sole agents to present this smart 3 bedroom property in one of Benalmadena's most sought after residential blocks. Pueblo Parque Evita is ideally positioned on Calle Boulevard just steps away from the stunning Parque de Paloma with its lakes, cafes and play areas. This quality residential area offers the best of both worlds, 10 mins walk to the local train station at Arroyo de la Miel for connection to the airport and Malaga. In the other direction you are within 10 mins of the beautiful beaches and promenade of Benalmadena. The apartment is set in the most desirable block within the development, directly facing the gardens, pools and with sea views. A tastefully decorated apartment, complete with 3 double bedrooms, 2 bathrooms, a terrace with retractable enclosure, fitted kitchen and a separate utility area. Gated entry with allocated parking space and air conditioning, this property is perfect for residential, second home or investment opportunities.

Covered Terrace  
Lift

Covered Terrace  
Marble Flooring

Double Glazing  
Private Terrace