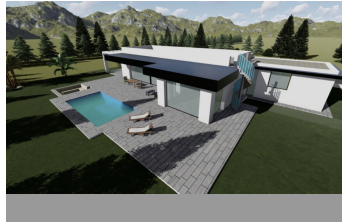
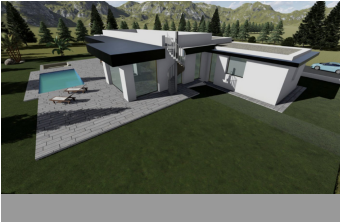


# INTERMOBILIARIA



## Villa - Chalet en La Cala Golf – 4 habitaciones – 5 baños

Hab.	<b>4</b>	Bathrooms	<b>5</b>	Const.	<b>440m2</b>	Terreno	<b>1412m2</b>
	<b>R4696159</b>	<b>property</b>		<b>La Cala Golf</b>		<b>1.595.000€</b>	

CONSTRUCTION STARTED - Project and license approved – Due to family circumstances this one floor first line golf, ecological luxury villa is for sale on the first line golf in La Cala Golf. This construction consists out of 4 bedrooms with 4 ensuite bathroom, guest toilet, master dressing, distributors, big living/dining/kitchen area, garage and storage room, heated pool with chill-out, covered terraces, terraces, and a solarium with pergola terrace and BBQ area. Pictures of the bathrooms and kitchen are only examples final choice of the finishings shall be for the client within the chosen line that we propose. Example of some of the specifications, -Outside walls of full villa with COVERLAM cladding - Interior and exterior floor tiles from GRESPANIA or LIVING CERAMICS 600x600 – 800x800 - 1200x1200 (Colour and size to choose) - Bathroom walls with COVERLAM or LIVING CERAMICS plates 2700X1200 (Color to choose) - Fully fitted bathrooms from ROCA or similar with furniture - Aerothermia/airconditioning - Electric underfloor heating in the bathrooms - Hydraulic underfloor heating in living room, and bedrooms - Ceiling high windows with sunken track, Planistar glass of 5+5/chamber/6+6 - Ceiling high pivot entrance door 1,50 wide - Ceiling high and 1-meter wide interior doors - Fully fitted kitchen with aluminum frame doors and covered with COVERLAM (Colour to choose) - Island with COVERLAM 3600X1600 no visible joints (Color to choose) - White goods from BOSCH or AEG - Downlighting in full villa - Dusk till dawn lights on entrance, terraces and solarium - Heated salt pool - Domotica - Volatic panels - 1 lithium battery of 10kW - Car charger

Access for people with reduced  
mobility  
Covered Terrace  
Ensuite Bathroom  
Private Terrace  
Storage Room

Access for people with reduced  
mobility  
Domotics  
Fiber Optic  
Restaurant On Site  
Utility Room

Basement  
Double Glazing  
Fitted Wardrobes  
Solarium