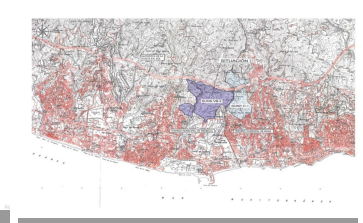
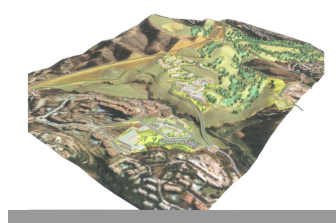
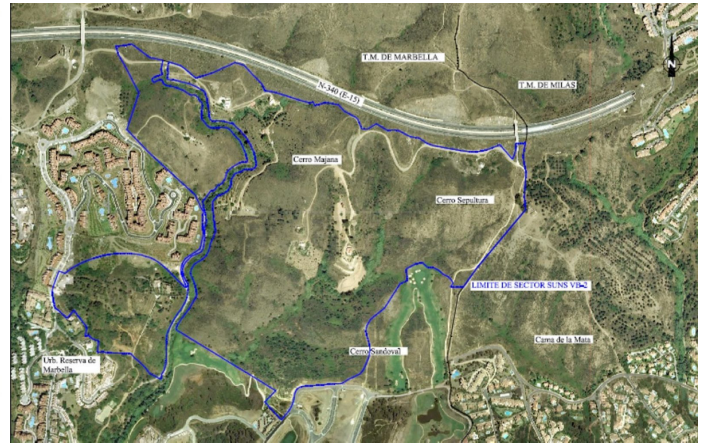


# INTERMOBILIARIA



## Terreno Rustico en Las Chapas – habitaciones – baños

Hab.	<b>0</b>	Bathrooms	<b>0</b>	Const.	<b>0m2</b>	Terreno	<b>21458m2</b>
<b>R4360702</b>		<b>property</b>		<b>Las Chapas</b>		<b>2.146.000€</b>	

This sector has a total area of 710,458 m<sup>2</sup>, of which 21,458 m<sup>2</sup> corresponds to this farm. It represents 3.02% of rights and obligations. The sector has a buildable area of 57,234.29 m<sup>2</sup> for Free Income Housing IN LOW DENSITY, 380 houses in Poblado Mediterráneo and 11 isolated houses. Buildable area of 40,362 m<sup>2</sup> for Hotels. 3,000 m<sup>2</sup> Economic Activities Golf Club and Commercial Area Which makes a total of 100,596.29 m<sup>2</sup> of surface area. Therefore 100,596.29 m<sup>2</sup> x 3.02% = 3,038 m<sup>2</sup> of buildable area, which would correspond to this plot.