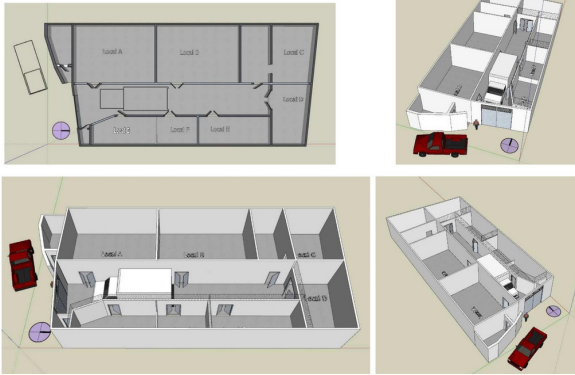


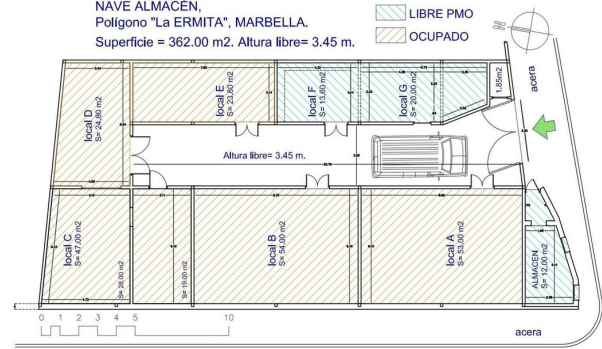
INTERMOBILIARIA

PERSPECTIVAS DE LA NAVE.



PLANOS. Plano de la nave.

NAVE ALMACÉN,
Polígono "La ERMITA", MARBELLA.
Superficie = 362.00 m². Altura libre = 3.45 m.



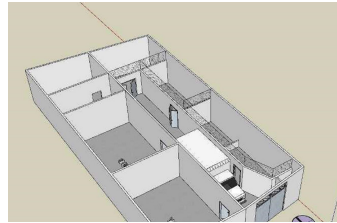
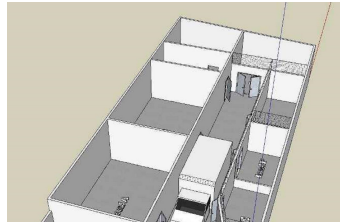
RESUMEN GENERAL DE LA OPERACIÓN

Nave industrial - Industrial store	
Superficies	362 m ²
Almacenes	7
Pasillo Común	1
Common areas	
Valoración - Valuation	
Precio €/m ²	828 €/m ²
* Precio €	300.000
Price €/m ²	
* Price €	
Rentabilidad - Profitability	
Alquiler mes	1.800 €
Month rental	
Alquiler anual	21.600 €
Annual rental	
Rentabilidad	7,2 %
Profitability	

* Este precio es negociable, incluye IBI comisión inmobiliaria.

* This price is negotiable, includes IBI and estate commission.

Nave perfecta para montar un negocio de oficinas profesionales, almacenes, empresas, etc....



Comercial en Marbella – habitaciones – baños

Hab.	0	Bathrooms	1	Const.	362m ²	Terraza	1m ²
R4195906		property		Marbella		300.000€	

PROPERTY OF FREEDOM - Only warehouse in the polygon for €759/Sq m! The ship has a constructed area of ??362 Sq m. It has two well-differentiated areas, the distribution corridor and the warehouse and office areas. Perfect ship to set up a business of professional trades, storage, or office with warehouse. Currently divided into 6 premises of which 3 are rented giving profitability and value to the investment. The ship is located in the La Ermita de Marbella industrial estate, it belongs to a two-story industrial building, located on the ground floor. Good situation, with connection to the motorway and bus, around there are also bars and restaurants. It is accessed by a pedestrian door or by vehicle access such as vans and trucks. From the central corridor it is divided into 6 interior rooms. The ship is easily adaptable for the disabled.