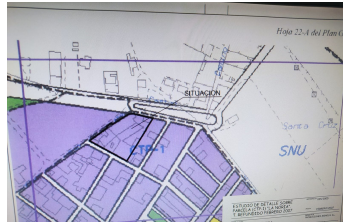
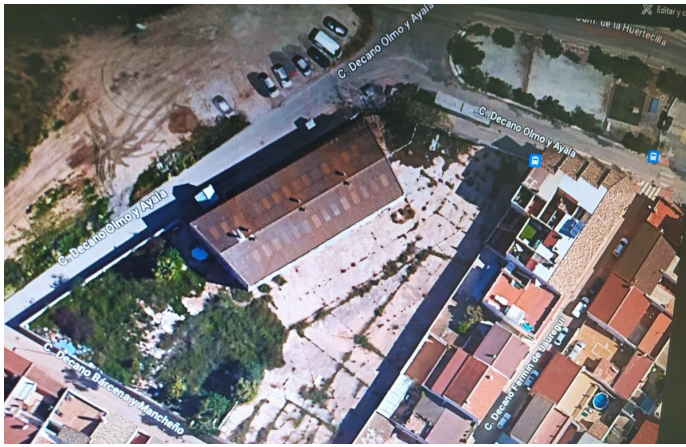


INTERMOBILIARIA



PARCELAS NETAS EDIFICABLES	
Parcela edificable 1:	1.660,98 m ² .
Parcela edificable 2:	1.099,33 m ² .
Total	2.760,31 m².
PARCELAS NETAS DE CESION	
Vial central	725,67 m ² .
A vial lateral de parcela 1	7,86 m ² .
Total	733,53m².
TOTAL SECTOR	3.493,84 m².

CONDICIONES DE EDIFICACION

EDIFICIO	SUP. OCUPADA	SUP. CONSTRUIDA
PARCELA 1	1.635,26 m ²	3.270,52 m ²
PARCELA 2	1.056,79 m ²	2.113,58 m ²
TOTAL	2.692,05 m²	5.384,10 m²

Terreno en Churriana – habitaciones – baños

Hab. **0** Bathrooms **0** Const. **6288m2** Terreno **3493m2**

R4137502

property

Churriana

1.375.000€

Residential Plot, Churriana, Málaga Ciudad. Garden/Plot 3493 m². Setting : Town, Commercial Area, Close To Golf, Close To Schools. Orientation : North, North East, East, South East, South, South West, West, North West. Views : Mountain, Golf, Country, Urban. Utilities : Electricity, Drinkable Water.