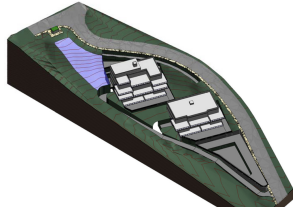


INTERMOBILIARIA



Terreno en La Cala Golf – habitaciones – baños

| | | | | | | | |
|------|-----------------|-----------------|----------|---------------------|---------------|-------------------|---------------|
| Hab. | 0 | Bathrooms | 0 | Const. | 1704m2 | Terreno | 4446m2 |
| | R3848254 | property | | La Cala Golf | | 1.500.000€ | |

Investment plot of 4.446m² with buildable 1.704,06m² and maximum of 20 units. Residential Plot, La Mairena, Costa del Sol. Garden/Plot 4446 m². Setting : Suburban, Country, Mountain Pueblo, Close To Golf, Close To Sea, Close To Town, Close To Schools, Urbanisation. Orientation : East, South, South West. Condition : New Construction. Views : Sea, Mountain, Panoramic. Utilities : Electricity, Drinkable Water.