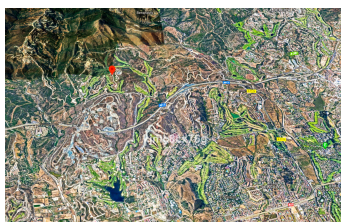
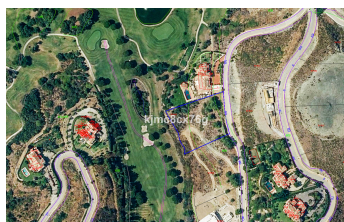
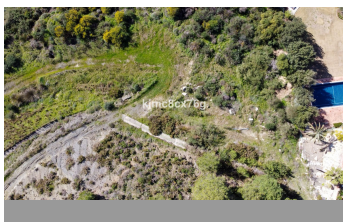
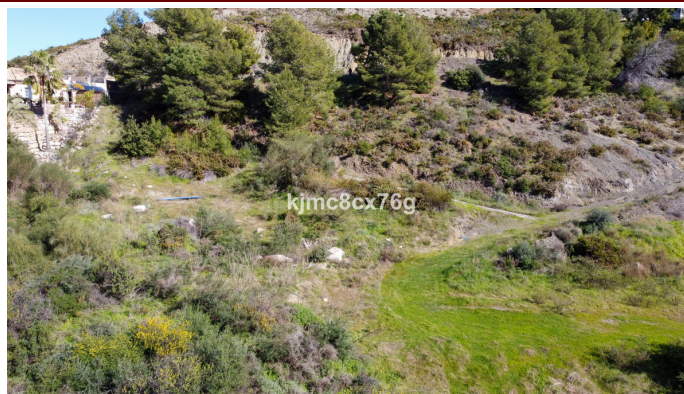


INTERMOBILIARIA



Terreno en Benahavís – habitaciones – baños

Hab. **0** Bathrooms **0** Const. **0m2** Terreno **4427m2**

R3768247

property

Benahavís

750.000€

This is one of the very last front-line golf plots available on the very prestigious Marbella Club Golf Resort and has magnificent views to the golf course, social club and the sea. The plot has a total area of 4,427 m2 and a building allowance of 490 m2, which refers to built areas above ground only (it does not include basements, patches or terraces). The Marbella Golf Club Course is a perfect blend of nature, golf, unique restaurant and service excellence. The club has highly developed streets and security, etc and sits amongst the hills of Benahavis. This magnificent golf course sits in the heart of the Costa del Sol and enjoys spectacular views of Gibraltar, the African coastline, Mediterranean Sea and the surrounding mountains: a truly wonderful place to live. Attached to the course, the club boasts the famous Marbella Club Equestrian Centre and it's unique luxury livery stables. The Equestrian Centre is proud to hold the Spanish National Show Jumping Competitions and has a state of the art modern arena - perfect to learn to ride a horse in.