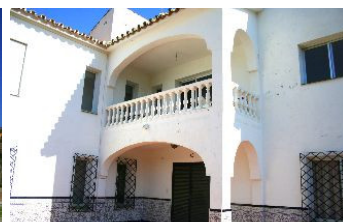


INTERMOBILIARIA



Comercial en Coín – habitaciones – baños

| | | | | | | | |
|-----------------|---|-----------------|---|-------------|-------|-------------------|-----|
| Hab. | 6 | Bathrooms | 2 | Const. | 893m2 | Terraza | 0m2 |
| R2322323 | | property | | Coín | | 1.900.000€ | |

EQUESTRIAN Centre . Loads of POTENTIAL . Excellent communication links . Close to the popular town of Coin . Close to many TAPAS Bars . Walking distance to local bar-restaurant . EXPERIENCE THE CULTURE AND LIFESTYLE of the Guadalhorce Valley Exclusive equestrian property with excellent communication links. Located only a few minutes from the centre of Coin and 30 minutes from Malaga and Marbella. The plot of 70,000m² is fully fenced, the house has its own well and water deposit. Picadero 600m² warehouse Large house of 300m² Workshop 300m² Stabling for 10 horses The house does require renovating but it would make a perfect equestrian centre or rural hotel. 30 minutes drive to Marbella 35 minutes to Malaga Airport

Access for people with reduced mobility

Access for people with reduced mobility

Barbeque

Covered Terrace

Fitted Wardrobes

Guest Apartment