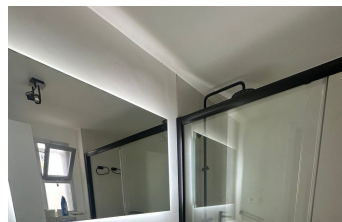
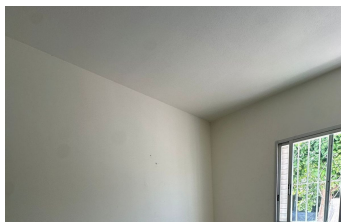
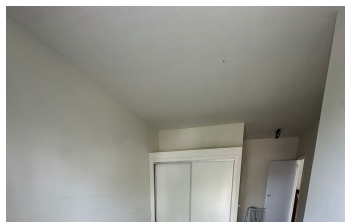


INTERMOBILIARIA



Apartment in Marbella – 2 bedrooms – 2 baths

Bedrooms	2	Bathrooms	2	Built	109m2	Terrace	30m2
R5141662	property	Marbella	655.000€				

Stunning Ground Floor Apartment in Nueva Andalucía's Prestigious Aloha Golf Valley Discover your dream home in the heart of Marbella's exclusive Nueva Andalucía Golf Valley! This beautiful 109 m² ground floor apartment in the sought-after Aloha area offers a perfect blend of luxury, comfort, and convenience. With breathtaking views of La Concha beach and lush gardens, this property is a rare gem for those seeking an elevated lifestyle. Property Highlights: Spacious & Modern Layout: 2 bedrooms, 2 bathrooms, a fully equipped kitchen, and a dedicated laundry room—all on one floor for seamless living. Private Garden: Enjoy your own outdoor oasis with stunning views of La Concha mountain and the sea. Accessibility: No stairs, ensuring easy access for all. Private Parking: Exclusive parking within the secure urbanisation. Premium Community Amenities: Relax or stay active with access to a swimming pool, tennis courts, paddle tennis court, and a state-of-the-art gym. Why Choose Aloha? Nestled in the prestigious Aloha Golf Valley, this location combines tranquillity with vibrant sophistication. Just minutes from Puerto Banús, you'll enjoy: World-class golf at Aloha Golf Club, Las Brisas, and Los Naranjos. A lively social scene with high-end restaurants, chic cafés, boutiques, and exclusive clubs. Proximity to international schools and top-tier sports facilities, perfect for families. Unrivalled views of the sea and La Concha mountain, blending luxury with natural beauty Whether you're seeking a serene retreat, a family-friendly home, or a smart investment, this apartment in Aloha offers it all. Don't miss the chance to own a slice of Marbella's finest lifestyle! Contact us today to schedule a viewing and make this stunning apartment yours!

Access for people with reduced mobility
Ensuite Bathroom
Gym
Paddle Tennis
Utility Room

Access for people with reduced mobility
Fiber Optic
Marble Flooring
Private Terrace

Double Glazing
Fitted Wardrobes
Near Transport
Tennis Court