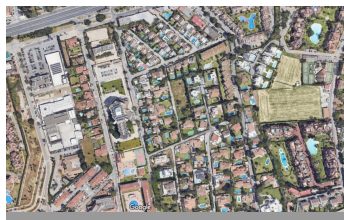
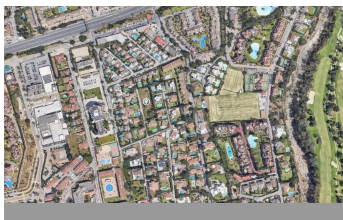
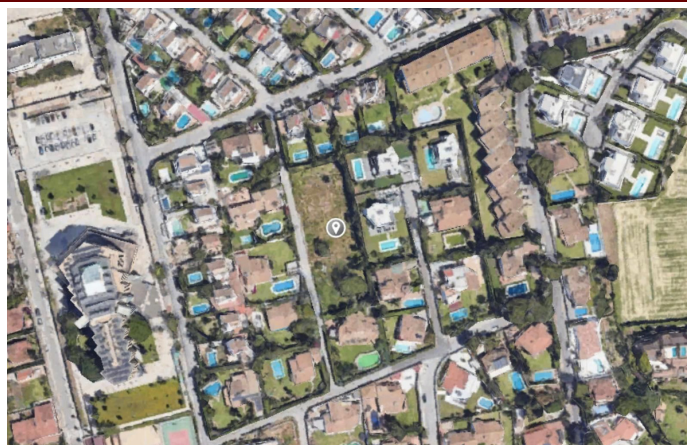


INTERMOBILIARIA



Plot in Atalaya – –

Bedrooms	0	Bathrooms	0	Built	0m2	Plot	864m2
R5066761		property		Atalaya		690.000€	

Prime Residential Plot in Atalaya Isdabe – Ideal for Villa Project An exceptional opportunity to acquire a beautiful residential plot in the sought-after area of Atalaya, perfectly positioned near Guadalmina Baja and El Campanario. This spacious and versatile plot offers outstanding development potential, ideal for investors or individuals looking to create their dream home on the Costa del Sol. With a generous 35% buildability (edificación), the plot allows for two exciting possibilities: The construction of three semi-detached villas, perfect for a boutique development project Or the creation of a luxurious, detached single-family villa, tailored to your personal vision Set within a tranquil yet well-connected residential area, the location offers easy access to prestigious golf courses, international schools, sandy beaches, and an array of dining and shopping options. El Campanario is known for its exclusive atmosphere and proximity to amenities, making it a highly desirable address for both residents and holidaymakers. Don't miss this rare opportunity to invest in one of the Costa del Sol's most promising residential zones.