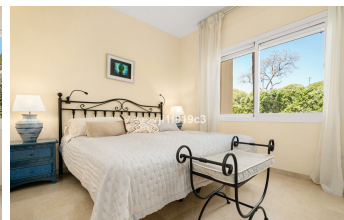


INTERMOBILIARIA



Apartment in Elviria – 2 bedrooms – 2 baths

Bedrooms **2** Bathrooms **2** Built **103m2** Terrace **35m2**

R5023621

property

Elviria

535.000€

Live in paradise with panoramic sea views in the exclusive Elviria Hills development in Marbella East! This beautiful corner apartment, in excellent condition, offers abundant natural light that fills every corner of its 2 bedrooms and 2 bathrooms. Upon entering, you are welcomed by a welcoming entrance hall that leads to a furnished kitchen with an adjacent terrace, perfect for enjoying breakfast with a view. The spacious living and dining room flows harmoniously onto a charming terrace, equipped with glass curtains, allowing you to relax and contemplate the sea in any season. This home features amenities such as air conditioning, central heating, underfloor heating in the bathrooms, and elegant marble floors throughout. For added convenience, it also has a parking space and storage room. The communal gardens, a tropical oasis, surround several swimming pools ideal for relaxation and leisure. In addition, the complex offers a 9-hole golf course, tennis courts, a gym, and a driving range, providing multiple recreational options. The clubhouse, with its famous El Lago restaurant and views of a serene lake, is the perfect place to unwind and enjoy special moments. Located just a few minutes' drive from Elviria beach and next to Greenlife Golf, this apartment combines tranquility and accessibility. The nearby Elviria Shopping Center offers a wide variety of shops, bars, restaurants, and services, while international and German schools are just 10 minutes away. Marbella city, Puerto Banús, and Malaga Airport are all within easy reach, ensuring excellent connectivity. Don't miss the opportunity to live in a place that combines luxury, comfort, and stunning views on the Costa del Sol!

Basement

Basement

Covered Terrace

Double Glazing
Lift
Paddle Tennis

Fitted Wardrobes
Marble Flooring
Private Terrace

Gym
Near Transport
Utility Room