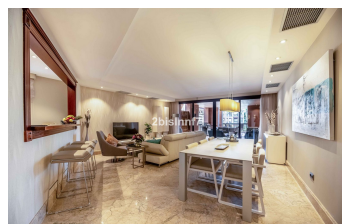
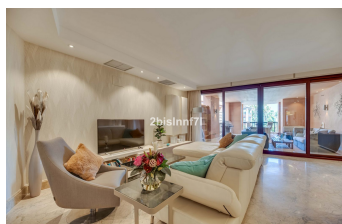
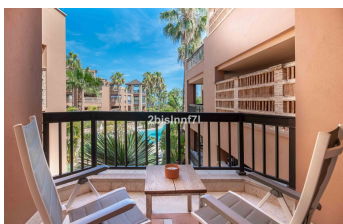
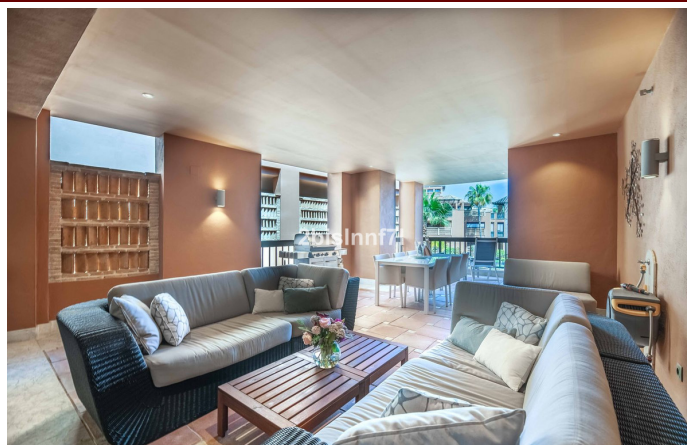


INTERMOBILIARIA



Apartment in San Pedro de Alcántara – 3 bedrooms – 2 baths

Bedrooms **3** Bathrooms **2** Built **154m2** Terrace **62m2**

R4764616

property

**San Pedro de
Alcántara**

995.000€

Frontline beach apartment in San Pedro, Marbella. Superb middle floor corner unit with two terraces, 3 bedrooms, 2 bathrooms and south west facing in Marbella Located in an exclusive complex right in front of the beach & promenade in San Pedro Alcántara. You can take a leisurely stroll along the promenade until the famous Puerto Banus, widely known as one of the most luxurious harbours of the world... This luxury apartment consists of a large cozy living and dining room with floor to ceiling windows that connect with an ample covered terrace, the covered terrace has partial sea views as well as views of an exuberant tropical garden. As it is a covered terrace, it can be enjoyed all year around as well as offering the greatest possible privacy. The kitchen is fully fitted, equipped with high quality appliances and partly open to the living room, perfect for socialise with your loved ones while cooking. The property has been built and decorated up to high standards. The bedrooms are ample and they have fitted wardrobes, all 3 bedrooms have access to an uncovered terrace through floor-to-ceiling window walls, there are 2 bathrooms one of them en-suite and the other one shared by the two bedrooms. The en-suite bathroom is worthy of a five-star hotel, as it has not only a shower but also a bathtub. Casablanca Beach is a front-line beach luxurious and secure community (with security guard and concierge service) located on the promenade in San Pedro Alcantara. It has a large front garden facing the sea with a private access gate to enter the promenade. Within walking distance to San Pedro town and Puerto Banus, and with all amenities close i.e. shops, banks, bars, restaurants (including Michelin-starred restaurants) , sports facilities and an international school. The complex has been built to a very high standard, comprises 61 units of apartments and penthouses and 6.000sqm of manicured gardens with tropical plants, palm trees and a large lake-like swimming pool with a direct private access to the beach.

Covered Terrace

Covered Terrace

Private Terrace