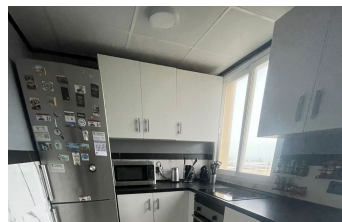
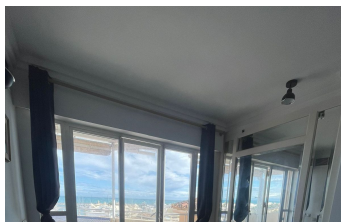
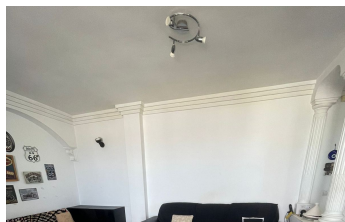
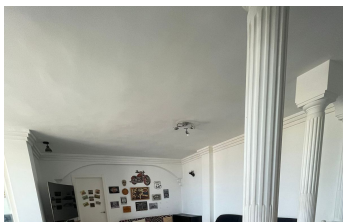
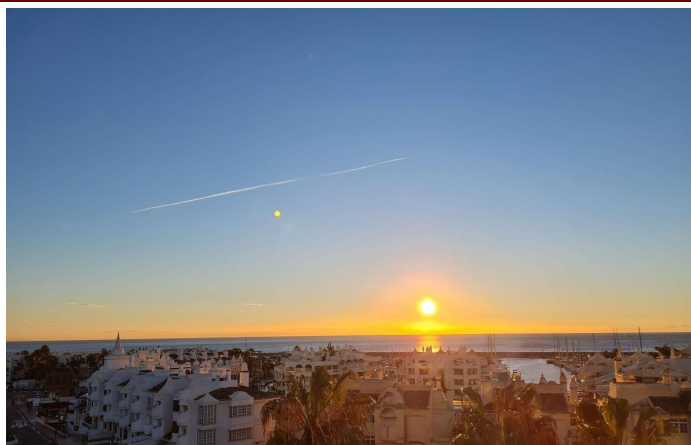


INTERMOBILIARIA



Apartment in Benalmádena Costa – 3 bedrooms – 2 baths

Bedrooms **3** Bathrooms **2** Built **155m2** Terrace **100m2**

R4763356

property

Benalmádena Costa

699.000€

NEW TO THE MARKET! LOCATION - LOCATION- LOCATION! BENALMADENA - PUERTO MARINA We are delighted to bring to you this wonderful 3 bedroom - 2 bathroom Penthouse, investment opportunity - Benalmadena - Puerto Marina. The apartment is just a 2 minutes walk to the beach and Puerto Marina, where there is an endless supply of Bars, Restaurants, Cafes, Supermarkets and Beauty salons and, of course, the beautiful beaches. The Penthouse property, occupies the whole top floor of the building. Because of not having any neighbours, the property has an unrivalled - panoramic sea view of the Marina and the Mediterranean sea, including all the local attractions such as the Ferris wheel, beaches and surrounding landmarks. The views are simply breathtaking! The large terrace is 70 square metres and wraps around the whole of the front and both sides of the apartment. The best thing; the views can never be taken away from the property due to the property being situated directly behind the Puerto Marina that has been built and established for years. No buildings can be built in front of the property, guaranteeing the views forever. The penthouse consists of 3 double sized bedrooms, all with built in wardrobes. Two of the bedrooms have the most amazing views through the large glazed windows, which lead onto the terrace. One of the large bedrooms have their own en-suite bathroom. The living room is bright and airy, due to the high ceilings and large patio doors leading to the wonderful terrace, which lets in ample light. The fully equipped kitchen is separate from the living room. From the kitchen you have amazing views overlooking the sea and marina. The air conditioning, for cooling and heating, is centralised throughout the whole property. The penthouse has a private parking space in the underground car park. This is a must see Penthouse!

Access for people with reduced mobility

Covered Terrace

Fiber Optic

Marble Flooring

Satellite TV

Utility Room

Access for people with reduced mobility

Double Glazing

Fitted Wardrobes

Near Transport

Solarium

Barbeque

Ensuite Bathroom

Lift

Private Terrace

Storage Room