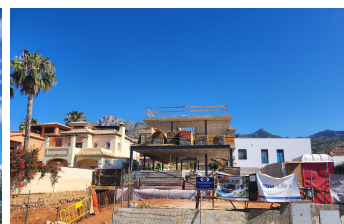
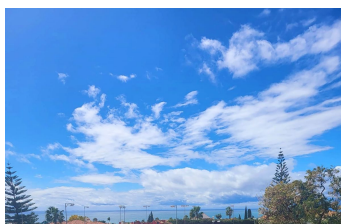
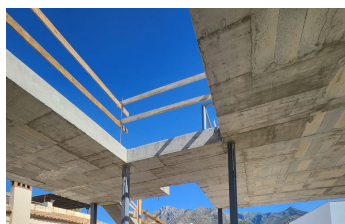
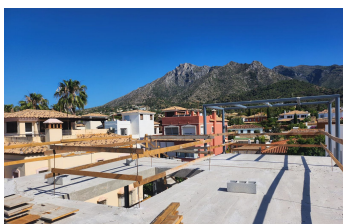


INTERMOBILIARIA



Detached Villa in Marbella – 4 bedrooms – 5 baths

Bedrooms	4	Bathrooms	5	Built	380m2	Plot	505m2
R4861609		property		Marbella		2.200.000€	

Stunning brand-new villa in El Higueral, central Marbella, featuring 4 bedrooms, 5 bathrooms, a 275m² terrace, and 113m² of land. This luxury villa, set in a peaceful area with breathtaking panoramic views of the sea and mountains, is scheduled for completion in April 2025. With 320m² of living space, it boasts an infinity pool, open-plan design, and high-quality Belgian construction materials. On the ground floor, the spacious living area features underfloor heating, a Nolte kitchen with premium Atag appliances, and floor-to-ceiling windows that open onto a sunny south-facing terrace. The infinity pool (8.6m x 4m) offers stunning sea views, perfect for relaxing and enjoying the Mediterranean lifestyle. This floor also includes a guest bedroom and a full bathroom. Upstairs, you'll find three bedrooms, including a master suite with direct access to a south-facing terrace with panoramic sea views. Two additional bathrooms and a second bedroom with terrace access complete this level. From here, you can reach the expansive 85m² solarium, featuring a chill-out zone and outdoor kitchen with a BBQ, ideal for entertaining. The basement provides a garage for two cars, a laundry room, a full bathroom, storage, and a multi-purpose room. The property offers parking for two additional vehicles via the access ramp. Located in a quiet, well-established residential area, this villa combines luxury and convenience, just 2 km from Marbella's Old Town, 3 km from the beach, and close to all amenities including supermarkets and shopping centers. With its panoramic sea and mountain views from every corner, this villa offers a unique blend of security, comfort, and prestige, perfect for those seeking an elegant home on the Costa del Sol.

Covered Terrace

Covered Terrace

Double Glazing

Ensuite Bathroom
Private Terrace

Fitted Wardrobes
Solarium

Near Transport