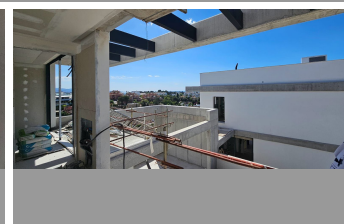
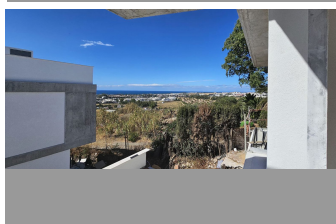
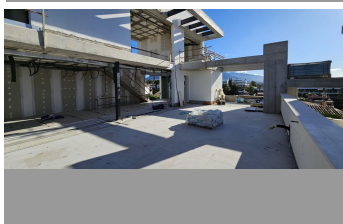


# INTERMOBILIARIA



## Detached Villa in Nueva Andalucía – 5 bedrooms – 5 baths

Bedrooms **5** Bathrooms **5** Built **287m2** Plot **400m2**  
**R4775758** **property** **Nueva Andalucía** **2.950.000€**

This unique new built (under construction) contemporary villa in concrete style provides the ultimate luxury open plan living. Located in the beautiful heart of Nueva Andalucía just a minute away from Puerto Banus, walking distance to shops and to the Puerto Banus and short driving distance from Marbella center and San Pedro. Designed across 4 floors, all accessible through the private elevator, the property offers 5 bedrooms and 5 bathrooms each with an outdoor terrace. Entrance level boasts of a large and spacious parking level for 4+2 cars with double height ceilings and a 2 bedrooms guest apartment + a studio with bathroom on street level. Welcoming exteriors include a manicured garden which surrounds the entrance and main entrance with water heated pool, cozy lounge areas, an outdoor dining area completed with its own outdoor kitchen and BBQ area for al fresco dining and fire place with chill out area. On the second floor you will find a 2 en-suite bedrooms and a hanging gallery, with ultra high ceiling overlooking the impressive living area. The generous master suite is completed with a walk-in shower, stand alone bath and an expansive walk-in wardrobe. A large outdoor sun terrace overlooks the pool and garden with access to the roof terrace. An expansive area with 3 separate terraces, giving you even more options for sunbathing and dining, while enjoying the breathtaking Sea and Mountain and landscape views. Construction has been started and will be finished end of July 2024.

Access for people with reduced mobility

Access for people with reduced mobility

Bar

Barbeque

Basement

Covered Terrace

Day Care  
Ensuite Bathroom  
Games Room  
Jacuzzi  
Near Mosque  
Sauna  
Storage Room

Domotics  
Fiber Optic  
Guest Apartment  
Lift  
Near Transport  
Solarium  
Utility Room

Double Glazing  
Fitted Wardrobes  
Gym  
Near Church  
Private Terrace  
Staff Accommodation  
WiFi