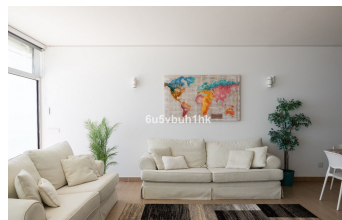
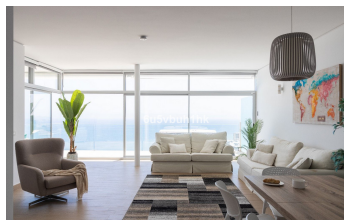
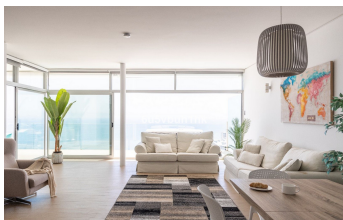
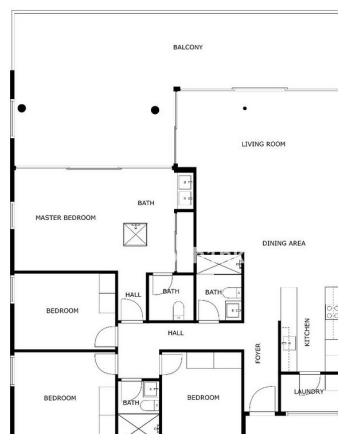


# INTERMOBILIARIA



## Apartment in Fuengirola – 4 bedrooms – 3 baths

Bedrooms	<b>4</b>	Bathrooms	<b>3</b>	Built	<b>220m<sup>2</sup></b>	Terrace	<b>55m<sup>2</sup></b>
<b>R4752718</b>	<b>property</b>	<b>Fuengirola</b>		<b>1.690.000€</b>			

Discover the pinnacle of coastal elegance at Residential Med One, situated in the prestigious la Reserva del Higuero. This exquisite penthouse offers breathtaking panoramic views of the Mediterranean Sea, making your dream of luxurious seaside living a reality. Inspired by the ocean, the design features wave-like curves and a harmonious color palette, while the modern, inviting architecture floods every space with natural light. This stunning penthouse redefines sophistication with four bedrooms and an open-plan, bright white kitchen. Upon entering, you are greeted by an expansive living area bathed in natural light, thanks to floor-to-ceiling windows that frame the breathtaking views. The seamless flow from the living space to the kitchen creates an airy, open feel, ideal for both intimate gatherings and grand entertaining. The kitchen is a chef's dream, boasting high-end stainless steel appliances, sleek marble countertops, and minimalist cabinetry that combines functionality with aesthetic brilliance. Every detail is meticulously crafted, from the polished chrome fixtures to the sophisticated lighting that enhances the pristine white palette. Each of the four bedrooms is a sanctuary of comfort and style, adorned with custom-built wardrobes. The master suite, a true retreat, offers a private haven with an en-suite bathroom and unobstructed sea views that promise tranquility and inspiration. Step outside onto the spacious terrace, where the seashore unfolds before your eyes. This outdoor oasis is perfect for al fresco dining, sun-soaked afternoons, and starlit evenings. With ample seating, it provides a serene escape from the busy life. Just 450 meters from the seaside and close to the train stop, this complex features three south-facing buildings with 2 to 4-bedroom penthouses. Enjoy spacious interiors, terraces with mini hot tubs, panoramic Mediterranean views, and top-quality finishes. Residents have access to Reserva del Higuero Resort's spa, sports club, swimming, tennis, paddle, and three restaurants, including the Michelin-starred SOLLO. The DoubleTree by Hilton hotel adds to the luxury. Shall we go for a

visit?

Basement  
Double Glazing  
Jacuzzi  
Near Transport  
Storage Room

Basement  
Ensuite Bathroom  
Lift  
Private Terrace

Covered Terrace  
Fitted Wardrobes  
Near Church  
Solarium